

THE ON-CAMPUS EXPERIENCE

at Youngstown State University



*Come find out
what it's all about!*

Table of Contents

Welcome to the On-Campus Experience.....	3
A Better College Experience	4
Academic Success	6
Comfort & Convenience	8
Safety & Support.....	10
Lyden House	12
Kilcawley House	13
Cafaro House	14
Weller House	15
Eating Well	16
Leadership Opportunities	18
Having Fun & Making Connections	20
Options: Buechner Hall & University Courtyard Apartments	22
Finding Your Way.....	24
Application Information	26



MISSION STATEMENT

To support the academic mission of the University by fostering a residential environment that provides affordable, safe and comfortable facilities as the foundation for a community that is conducive to academic success and student development in the areas of intellectual, emotional, ethical, social and cultural growth.



Welcome TO THE **ON-CAMPUS EXPERIENCE!**

The Office of Housing & Residence Life would like to congratulate you on your decision to attend Youngstown State University. We understand that college is a new and exciting experience for everyone, and we believe that living on campus greatly enhances your YSU education. Whether you are an out-of-town or local student, you will find a residential campus community that fosters academic success and personal growth.

You'll also find that living on campus offers you independence and comfort. Our residence halls are modern, attractive and have the latest amenities. We feature spacious double-occupancy rooms and a limited number of triple-occupancy rooms. Every room is air conditioned with individual room thermostats. We provide cable TV, high-speed Internet, and phone service with individual voice mail. Each residence hall has a computer lab, fitness equipment, a recreation area with pool and ping pong tables, laundry room, kitchen, and vending and change machines.

Students tell us one of the best things about living on campus is that you meet so many people and learn so much about yourself and others. Housing & Residence Life is here to support you while you are learning and growing, all with the help of our friendly, dedicated, and well-trained staff.

Each of our residence halls offers its own unique atmosphere and style of living. We encourage you to look at "The On-Campus Experience" and to help you determine which residence hall feels like home to you.



it's about **A BETTER**

WHAT COULD BE A BIGGER PART OF THE COLLEGE EXPERIENCE THAN LIVING ON CAMPUS IN A RESIDENCE HALL? Meeting new friends, making yourself “at home” in your room, and getting involved with everything YSU has to offer are all just the beginning of your college life.

Housing & Residence Life’s residence halls offer the perfect atmosphere for making the most of your college experience. By choosing to live on campus, you gain a feeling of being connected to the University. You are among students who can relate to what you are feeling as you begin this new part of your life.

Beginning your college career is an adjustment, but the benefits of living on campus will make the transition easier. You will be in the center of it all. Classes, Maag Library, Andrews Recreation and Wellness Center, the YSU Bookstore, numerous eateries, and even the Home Savings & Loan bank are all just steps away from our residence halls. You’ll have the opportunity to relax and enjoy it all, while making friendships in your residence hall community that will last a lifetime.



COLLEGE EXPERIENCE

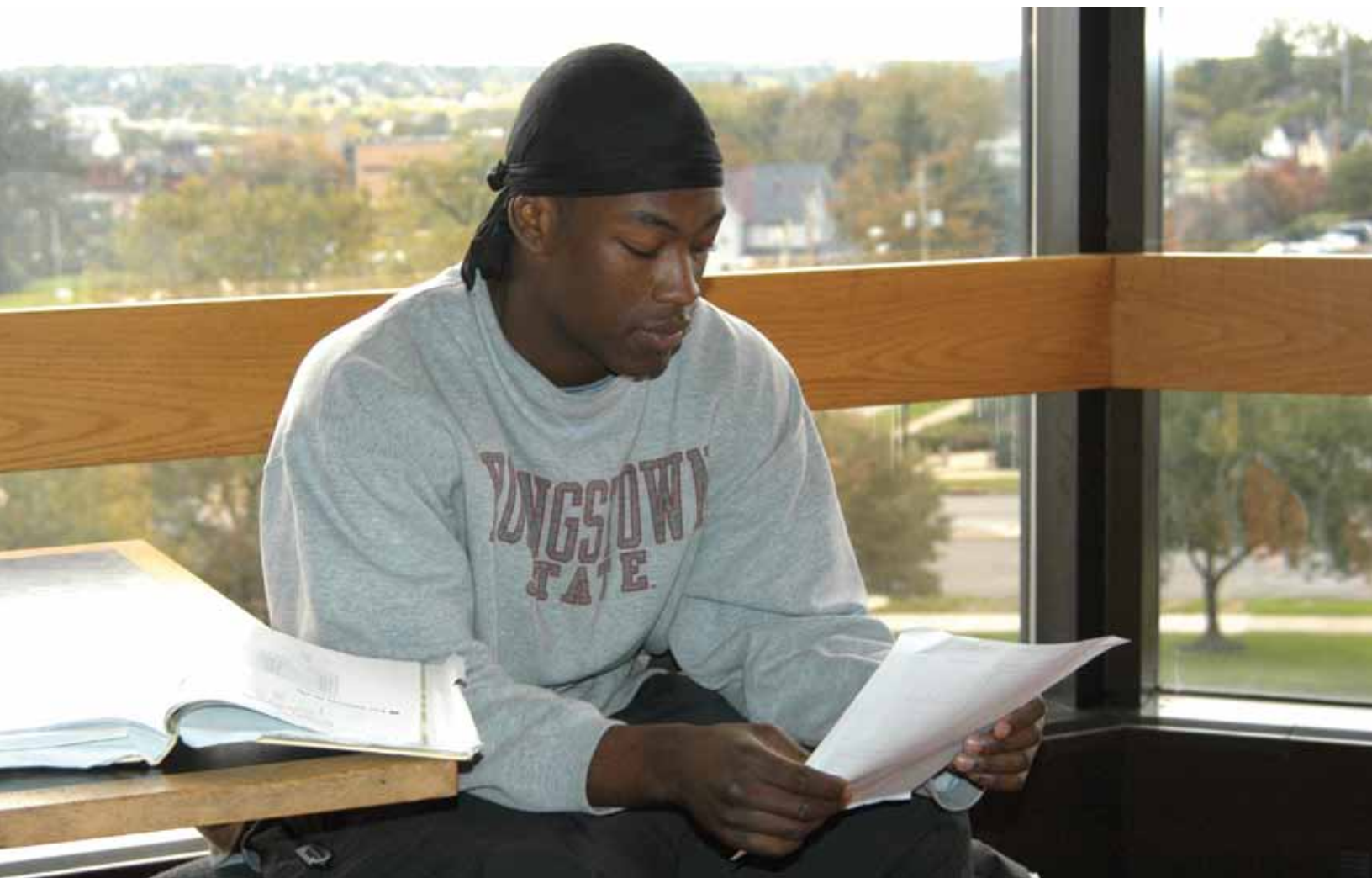
An aerial photograph of a college campus. A wide, light-colored paved path winds through a green lawn. Numerous students are walking along the path, some carrying backpacks. The scene is captured from a high angle, showing the layout of the path and the surrounding greenery. The top of the image is partially obscured by a red banner containing the title.

“I’ve commuted and I’ve lived on campus—I have to admit that living on campus in the residence halls has really completed my college experience. There’s always something to do, and I’ve made good friends here. Plus you have the chance to experience independence while still having the support you need to succeed in college. It’s a comfortable community with immediate access to the rec center, library, and good places to eat. I’m so glad I chose to live on campus.” —Becca Madden, Nutrition

it's about **ACADEMIC**

STUDENTS WHO LIVE ON CAMPUS AT YSU are more likely to get involved in extracurricular activities and learn valuable educational, social, and leadership skills. This involvement helps create a feeling of ownership and belonging. And research shows that students who live on campus obtain higher grade point averages than those who commute or live off campus. Across the nation, those college students choosing to live on campus are more satisfied with their college experience and are more likely to graduate than their commuting peers.

In Housing & Residence Life, we understand you are at YSU for a quality education. It is important to us that while you are in our residence halls you are getting the academic support you need. That is why we offer Residential Peer Assistants (RPAs) in Kilcawley House and Lyden House. RPAs are employed by Housing & Residence Life and the Center for Student Progress to ensure all new students have an academic connection to YSU. RPAs are upperclass students who live in their assigned residence halls and help the residents in their community achieve academic success. Residential Peer Assistants help students register for classes; promote academic resources such as tutoring, the Writing Center and supplemental instruction; and provide academic workshops in the halls, for example, one on test taking skills. The RPAs also serve as valuable liaisons between students and the multitude of services offered by the Center for Student Progress such as supplemental instruction and tutoring.



SUCCESS

“Residence halls have been shown to contribute to higher levels of faculty-student interaction and peer support, better academic and social integration, greater satisfaction and commitment, and higher college retention for students living in residence halls than for their off-campus counterparts.”

Journal of College and University Student Housing
Wang, Arbolea
Shelley & Walen



Academic Resources at YSU:

Center for Student Progress

- Supplemental Instruction
- Student Tutorial Services
- First-Year Student Services

Mathematics Assistance Center

The Writing Center

Language Learning and Resource Center

Honors Office

Curriculum Resource Center

Maag Library

it's about COMFORT &



Comfort

We want you to feel at home when you live on campus in the residence halls. That's why we make great efforts to keep our facilities modern, clean, and comfortable.

Accommodations for each student in every room include an extra long twin bed, a mattress with mattress cover, a desk with bookcase and a chair, a wardrobe or closet, and mini-blinds on the window. For students' comfort, all rooms have individually controlled heating and air conditioning.

In addition, all residence halls have wireless high-speed Internet access, cable, local phone line access, voicemail, and long distance via a personal PIN. Students may also purchase optional HBO and other premium or digital cable channels.

Add to that your own stereo, TV, VCR, DVD player, computer, personal refrigerator (max. 2x3 ft.), and telephone and you have all the comforts of home.

Special Needs

If you have mobility impairments or other special needs, please discuss these with the Director of Housing & Residence Life, who will do everything possible to make you comfortable in your new home. Special wheelchair-accessible rooms and furniture are available.

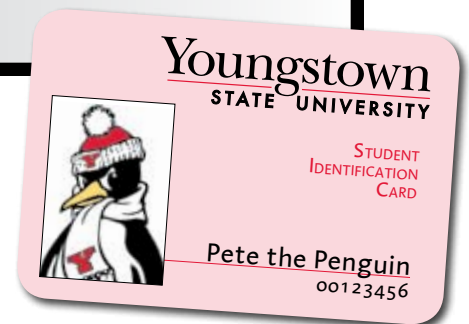
Your Health Away from Home

The University's Student Health Services office is located in Kilcawley House. Nurses are on staff Monday through Friday 8am-5pm, and doctors are available by appointment. All on-campus services are free to YSU students, however, lab tests done off campus must be paid for by the student. Appointments can be made by calling Student Health Services. To make an appointment or for further information, please contact Student Health Services at (330) 941-3489.

Your YSU ID:

Making campus life convenient.

- Meals
- Library Checkout
- YSU Athletic Tickets
- Performing Arts Tickets
- Andrews Student Recreation & Wellness Center Access



CONVENIENCE

Convenience

One of the most convenient aspects of living on campus is *no hidden costs*. You don't have to worry about paying monthly rent, utility, Internet and cable bills, buying furniture, stressing about maintenance issues, or constantly buying groceries. Your room and board costs include it all.

Living close to classes and campus resources such as Maag Library, the Center for Student Progress, Student Health Services, and Andrews Recreation and Wellness Center also means not having to worry about finding a place to park when you're late for class or a meeting, have an appointment, want to meet friends, or are going to work out.

The Penguin Shuttle brings a whole new level of convenience to students at YSU. Two Penguin Shuttles make continuous loops around campus in opposite directions. All of our residence halls have Penguin Shuttle stops in addition to stops at various campus buildings.



it's about SAFETY & SUPPORT



Safety

Safety is a priority at YSU. In fact, Youngstown State University prides itself on consistently being one of the safest campuses in Ohio.

Residence Hall Security

Cafaro, Kilcawley, and Lyden Houses have a front desk that is staffed 24 hours daily (with police officers from midnight to 5:00 a.m.). Exterior residence hall doors are locked in the evening. Weller House exterior doors remain locked at all times. All guests are required to sign in and leave a valid ID at the front desk. In addition, all guests must be accompanied by their hosts.

Residents are encouraged to lock their doors when they leave their rooms unoccupied, and each door is equipped with a deadbolt. Room door lock changes are mandatory when a resident loses keys.

All residence halls have modern fire protection including sprinklers and smoke detectors. In addition, every residence hall is equipped with state-of-the-art exterior and public-area video surveillance cameras to monitor safety.

Safety Around Campus

It is important that all YSU students feel safe while they are on campus. The YSU Police Department can be seen patrolling campus 24 hours a day, 7 days a week. They also provide the Student Security Service that provides students an escort across campus. Whether it is after dark and a student wants to feel safe or a student is on crutches and needs assistance getting to class, the Student Security Service is available. Campus is also equipped with a blue light and emergency phone system. To help students get from one point on campus to another in the evening, the Penguin Shuttle runs late hours.



Support

The Housing & Residence Life staff is eager and excited to be a part of your on-campus experience. We are here to support you while you live in our residence halls. In addition to Residential Peer Assistants, each floor/wing of the residence halls has a Resident Assistant (RA). RAs are upperclass students who have undergone thorough training and are charged with creating a strong community on their floor/wing. RAs also serve as invaluable resources to residence hall students.

Graduate students with experience in Housing & Residence Life are employed as Graduate Assistants (GAs). Many are former RAs, and all of them live on campus. Each residence hall is assigned a GA to assist with daily operations of the residence hall, and two additional GAs focus on programming and leadership.

The full-time professional staff members who work and live in each of the residence halls are called Housing Coordinators. Housing Coordinators supervise the RAs of their residence hall and the GAs. They attend to the needs of the residents, handle emergencies, and keep the facilities safe, clean, and maintained. There is

a professional staff member, usually a Housing Coordinator, on call twenty-four hours a day, seven days a week. Housing Coordinators typically hold a master's degree in student services and have extensive training in all aspects of their position.

In addition to the multitude of live-in staff, Housing & Residence Life also consists of professional staff responsible for the areas of residential education and technology, conferences and facilities as well as an associate director, a director, and a central office staff. The Office of Housing & Residence Life is located on the first floor of Kilcawley House and is open Monday through Friday from 8:00am to 5:00pm. Please let us know how we can help you while you are living with us.

For more information on current Housing & Residence Life Staff, go to the staff page of our website:

<http://www.cc.yosu.edu/student-services/livingoncampus/staff/index.shtml>



LYDEN HOUSE



When **LYDEN HOUSE** opened in the fall of 1990, a new era began for on-campus housing at Youngstown State. The impressive five-story structure reflects a traditional collegiate Gothic style with clean, contemporary lines.

Lyden House, located just north of central campus along Madison Avenue, houses 300 students. A typical student room is 12'x 16' and houses two students. Some rooms in Lyden accommodate three students. In addition to a bunk bed, which can be stacked or separated, each student has a desk and chair, a dresser, a shelving unit and an armoire wardrobe unit. The furniture is uniquely designed to interchange to suit the individual student's tastes in personal decor.

Rooms also feature room-controlled heating and air-conditioning units, cable TV, telephone jacks with caller ID and voicemail, Internet access, decorator vertical window blinds, overhead lighting and tiled floors. All rooms in Lyden are handicapped accessible.

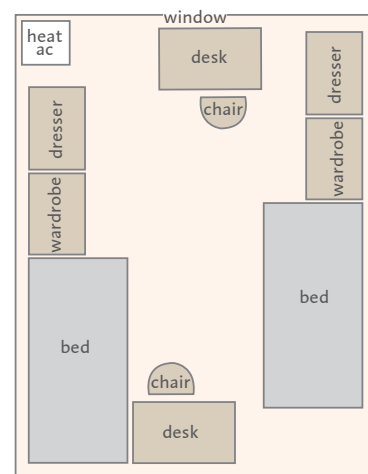
Each wing of this beautifully designed residence hall includes convenient shower and restroom facilities, quiet study rooms, and comfortable conversation lounges. In addition, there is a microwave station located on each floor. Students have full access to a kitchenette/vending area; TV lounge with VCR; ping-pong, pool, and foosball tables; fitness room; a computer lab with Internet access; and laundry facilities in the lower level of Lyden. A convenient parking area is also available adjacent to Lyden House.

- CO-ED BY WING
- HANDICAPPED-ACCESSIBLE ROOMS AVAILABLE
- LOUNGES ON EACH FLOOR AND BASEMENT STUDY LOUNGE
- GAME ROOM WITH TV AND VCR, PING-PONG, POOL, AND FOOSBALL TABLES
- FITNESS ROOM
- COPY MACHINE
- CHANGE MACHINE
- NEARBY PARKING AREA
- COMPLETELY SMOKE-FREE BUILDING
- COMPUTER LAB WITH PRINTER



LYDEN HOUSE TYPICAL ROOM

Room is
12' 8" x 16'



Lyden House
251 Madison Ave.
Youngstown, OH 44504

Lyden House Coordinator
330.941.1981

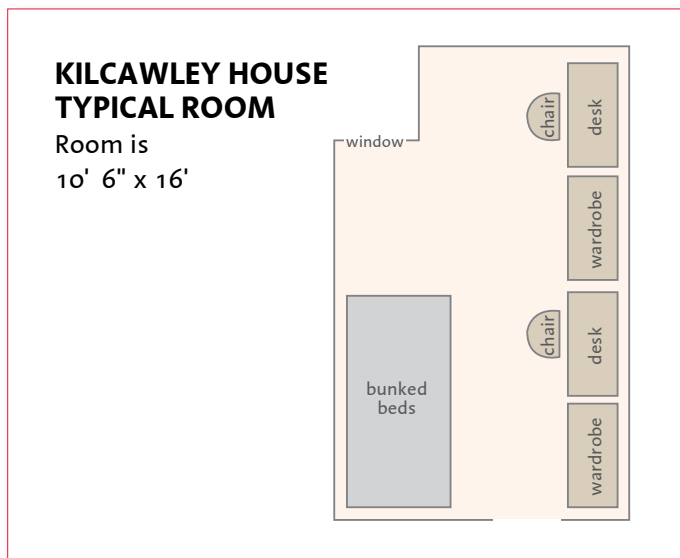
KILCAWLEY HOUSE



KILCAWLEY HOUSE was constructed in 1965. All areas of this facility have recently been refurbished. Public areas, bathrooms, and student rooms are attractive and modern. This traditional type, seven-story housing facility can accommodate 224 students. Kilcawley residents live in double or triple occupancy rooms, complete with bunk beds, wall-to-wall carpeting, room-

controlled heating and air-conditioning units, built-in desks and armoires, telephone jacks with caller ID and voicemail access, Internet access, cable TV, and plenty of closet and drawer space.

A computer lab with Internet access is located in the basement. The basement also contains a TV lounge equipped with a TV and VCR; a game room with ping-pong, pool and foosball tables; a kitchen with vending machines; fitness equipment; and two music practice rooms. Its residents have the advantage of being located in the heart of the YSU campus and can use all of Kilcawley Center's facilities, including Home Savings and Loan bank, computer center, and copying services, without going outdoors.



- CO-ED BY FLOOR
- HANDICAPPED-ACCESSIBLE ROOMS AVAILABLE
- RECENTLY REFURBISHED
- LOUNGES WITH MICROWAVES ON EACH FLOOR
- GAME ROOM WITH TV, VCR, PING-PONG, POOL AND FOOSBALL TABLES
- FITNESS EQUIPMENT
- 2 MUSIC PRACTICE ROOMS
- COPY MACHINE
- CHANGE MACHINE
- CONNECTED TO KILCAWLEY CENTER
- COMPLETELY SMOKE-FREE BUILDING
- COMPUTER LAB WITH PRINTER

Kilcawley House
117 University Plaza
Youngstown, OH 44502

Kilcawley House Coordinator
330.941.2187



CAFARO HOUSE



CAFARO HOUSE, our co-ed residential honors facility, opened in fall 1995 and houses 274 students from the University Scholars, B.S/M.D., and Honors programs. The Emerging Leader Community is also housed in Cafaro. The facility has enclosed suites that accommodate 4 to 18 residents and one traditional hallway of rooms that house two to three residents.

Each room features room-controlled heating and air-conditioning units, cable TV, telephone jacks with voice mail access, Internet access, window blinds, overhead lighting and tiled floors. (Handicapped accessible rooms are available.)

Students have full access to a kitchen/vending area, TV lounge with VCR, ping-pong and pool tables, fitness room, and laundry facilities in the basement. This facility also has academic spaces such as a seminar room, a computer lab with Internet access, and music practice rooms.

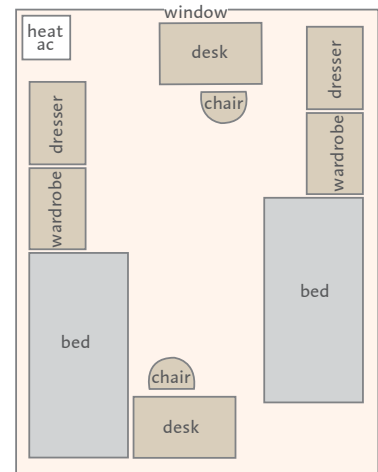
A convenient parking area is also available adjacent to Cafaro House.

- **HOUSES HONORS STUDENTS, UNIVERSITY SCHOLARS, AND BS/MD STUDENTS**
- **CO-ED BY SUITE**
- **HANDICAPPED-ACCESSIBLE ROOMS AVAILABLE**
- **LOUNGES ON EACH FLOOR AND FIRST-FLOOR STUDY LOUNGE**
- **GAME ROOM WITH TV AND VCR, PING-PONG, AND POOL TABLES**
- **FITNESS ROOM**
- **ACADEMIC SEMINAR ROOM**
- **MUSIC PRACTICE ROOMS**
- **COPY MACHINE**
- **CHANGE MACHINE**
- **NEARBY PARKING AREA**
- **COMPLETELY SMOKE-FREE BUILDING**
- **COMPUTER LAB WITH PRINTER**



CAFARO HOUSE TYPICAL ROOM

Room is approx. 11' 6" x 15' 6"



Cafaro House
205 Madison Ave.
Youngstown, OH 44504

Cafaro House Coordinator
330.941.4742

WELLER HOUSE



WELLER HOUSE is located along Wick Avenue next to the Arms Family Museum of Local History and near The Butler Institute of American Art. Weller House accommodates juniors, seniors, and graduate students.

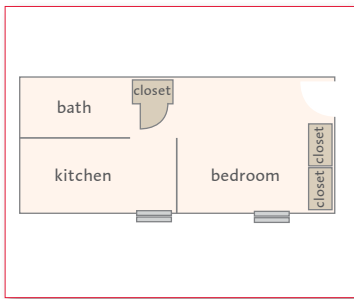
Weller House opened in fall 1991, offering apartment-style on-campus living, each unit having a full bathroom with tub and/or shower, and a kitchen furnished with modern cabinets,

Internet access, telephones with caller ID and voicemail, cable TV, an electric range, refrigerator/freezer, and a garbage disposal. Weller also offers students convenient laundry facilities and fitness equipment on the lower level.

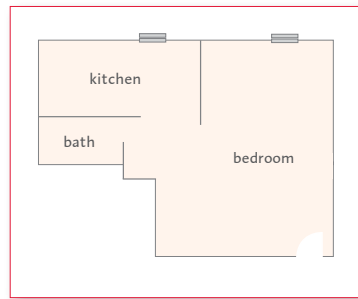
Apartments vary in size and are designed to accommodate a range of students. Apartment styles include singles, one-bedroom doubles, two-bedroom doubles and even a three-bedroom triple. Each bedroom is equipped with cable and telephone lines for maximum privacy.

Weller House offers the best of on-campus living with the autonomy of an apartment-style setting.

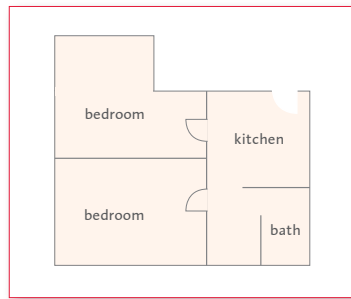
WELLER HOUSE TYPICAL FLOOR PLANS



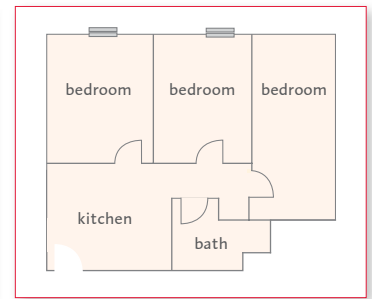
apartment 3
single



apartment 6
1 bedroom double



apartment 17
2 bedroom double



apartment 7
3 bedroom triple



Weller House
658 Wick Ave
Youngstown, OH 44502

it's about **EATING WELL**

Resident Meal Plans

Youngstown State University Dining Services, managed by Sodexo Campus Services, provides an exciting and innovative meal program for the residential community at Youngstown State University. You have a variety of restaurants to choose from, all conveniently located within walking distance of our residence halls.

Dining on campus provides the social experience essential to campus life. It gives you the opportunity to gather with friends, take study breaks, hang out, relax and unwind after a hard day of classes and activities. When you dine at the Youngstown State University restaurants you will enjoy comfort, convenience, outstanding food, and inviting atmosphere all designed especially for you.

The following locations are available for use with your University Housing meal plan:

BAGEL STOP—Kilcawley Center, lower level

Our version of a New York bagel shop. We proudly brew only Starbucks® Coffee, have a complete line of bagels and pastries, and offer made-to-order wraps and gourmet specialty salads.

CAFÉ A LA CART—Beeghly Hall, Cushwa Hall, and Williamson Hall, main lobby

Seattle's Best Coffee® is available all day, as well as an assortment of baked goods. Other selections include specialty salads, sandwiches, fresh fruit and a variety of snacks and sodas, for both breakfast and lunch.

CHRISTMAN DINING COMMONS—Located by Lyden and Cafaro residence halls

Christman is an “all-you-can-eat” concept, as long as guests remain in the dining room. We offer a variety of menu selections for breakfast, lunch and dinner. Enjoy fresh baked goods, hearty soups, healthy entrees, deli sandwiches, delicious desserts, an abundant salad bar and fresh fruit, along with daily “Smart Choice” selections, homemade pizza, and hot grill favorites.

CORNER CAFÉ—On the Wick Avenue bridge

Stop by in the morning and enjoy hot Starbucks® coffee and freshly baked muffins or bagels. Fresh made-to-order sub sandwiches, salads, and snacks are also available along with a variety of pre-made items.





JAZZMAN'S CAFÉ—Maag Library, third floor

Along with specialty muffins, cookies and pastries, this stylish coffee bar also offers delicious espressos, lattes, cappuccinos and other coffee-based beverages, both hot and cold. Your favorite gourmet focaccia sandwiches, specialty salads, and smoothies are also available.

KC FOOD COURT—Kilcawley Center, lower level

Freshens—features fresh fruit smoothies and hot pretzels.

Grill 155°—the place for delicious char-grilled sandwich favorites and daily specials.

KFC Express—the Colonel's great chicken and sides you already know and love.

SmartMarket—geared for those in a hurry. Featuring grab-n-go salads, subs, wraps, homemade cookies, muffins, and parfaits, along with fresh fruits and vegetables. All individually wrapped for quick and easy service.

SubConnection—where you go for custom-made sub sandwiches and hot soup.

PETE'S PLACE—Kilcawley Center, street level

Your place to go for a relaxed, full-service dining experience. Featuring a fresh and inviting breakfast buffet, along with made-to-order omelets and traditional breakfast favorites to help start your morning. Lunchtime features our special all-you-can-eat pizza and salad bar, along with bistro-style sandwiches produced in a wood-fired oven, Italian pastas, gourmet salads, and desserts. Outdoor dining is available under umbrella-topped tables late spring thru early fall.



Locations on Campus

- 1 Bagel Stop
- 2 Café a la Cart, Beeghly Hall
- 3 Café a la Cart, Cushwa Hall
- 4 Café a la Cart, Williamson Hall
- 5 Christman Dining Commons
- 6 Corner Café
- 7 Jazzman's Café
- 8 KC Food Court
- 9 Pete's Place

*it's about
learning and leadership*
OPPORTUNITIES

HOUSING & RESIDENCE LIFE IS ALWAYS LOOKING TO PROVIDE LEARNING AND LEADERSHIP OPPORTUNITIES ON CAMPUS. One

opportunity is to work in our residence halls. Many students choose to work while they are in school, but they drive to jobs off campus and spend extra time and money doing so. We offer our students the opportunity to work on campus right in our residence halls. This gives students the chance to save that gas money and the extra time traveling to and from work, and instead work in a familiar environment with people they know while gaining leadership experience as well. Our resident assistant positions are the perfect way to gain extensive leadership training and experience. Our desk attendant positions provide students with the chance to be a resource to fellow students and be a known presence in the residence hall. Stop in the Office of Housing & Residence Life for more information.

YSU's Residence Hall Association is a great way for all residents to get involved and be leaders in the residence halls. The Residence Hall Association, (RHA) is a member of an international organization which connects residential student organizations on over 350 campuses in the United States, Canada, Mexico, Spain, and Australia. RHA seeks to create an enjoyable living community for residents, present fun and informative programs; provide resident input about housing policies and developments; and take care of the needs of the students. There are RHA meetings every week, and all residents are welcome to attend because every resident of University Housing is automatically a member. RHA is always available to field any questions, comments, or concerns that you might have regarding life on campus.



LIVING LEARNING COMMUNITIES

A Living Learning Community is a residence hall community designed to bring together students with similar goals and interests. Involvement in the communities enables students to build connections in and out of the classroom. Students live in a common area, enroll in classes together, and participate in activities which provide opportunities to grow and learn beyond the classroom.

The Office of Housing & Residence Life has collaborated with other departments to offer the following Living Learning opportunities:

Business Living Learning Community (BLLC): The BLLC is a collaborative effort with the Williamson College of Business that offers freshmen business majors a cohesive academic experience, uniting class learning with out-of-class networking and support. Students accepted into the BLLC live together in Lyden House and enroll in the same sections of several Business tool courses.

Emerging Leader Community (ELC): The ELC is a residential branch of the campus-wide Emerging Leader Program. This community offers students of all classifications not only the opportunity



As a Member of CLC

- We will do our best to place you with another CLC participant in Cafaro House.
- YSU General Education Requirements will be completed.
- Students are expected to participate in a weekly seminar class covering topics such as campus resources, the freshman experience, study tips, and campus involvement.

Benefits of the Program

THE FOLLOWING EXPERIENCES AWAIT YOU:

- Learn more about yourself and the community around you.
- Meet (and live with) new friends who will help you become a strong leader.
- Live in a spacious environment in Cafaro House, our honors facility, with other CLC students.
- Develop leadership abilities by engaging in new and exciting experiences.
- Receive a certificate, notation on your transcript, pin, and cords for you to wear when you graduate from YSU!

it's about **HAVING FUN**

Having Fun

Housing & Residence Life strives to provide our students with activities throughout the year that give them opportunities to socialize, have fun, and learn something new. We know it is important for students to relieve the stress and anxiety of fast-paced academic life. Therefore we encourage our residents to participate in extracurricular activities.

In addition to YSU's Andrews Recreation and Wellness Center and intramural programs, extracurricular leadership opportunities, and Student Activities events, Housing & Residence Life offers students a wide range of social and educational activities. Resident assistants plan programs for their residents that include everything from community service events to study skills and time-management workshops to Superbowl parties.

Housing & Residence Life staff also plan more elaborate activities throughout the year for all residents. These events include Safer Sex Week, Diversity Week, Family Day, National Collegiate Alcohol Awareness Week, and L'il Sibs Weekend.

Safer Sex Week is held in the fall. It is a week of informative and interactive programs designed to educate residents about the health and personal benefits of abstinence and safe sex.

Family Day is held in the fall. It is a day for family and friends to visit students, eat a wonderful buffet dinner accompanied by a jazz band, and go to a home football game or take in art at one of the local museums.

National Collegiate Alcohol Awareness Week is held in the fall. It is a week of fun and interactive programs designed to educate students about the effects of alcohol and the consequences of binge drinking in college.

Diversity Week, held in the spring, focuses on all areas of diversity including issues of ethnicity, gender, sexual orientation, disabilities, socioeconomics, and age.

L'il Sibs Weekend is held in the spring. It is a weekend designed for residents to bring younger siblings (and cousins, etc.) to stay with them to have fun and experience life on a college campus.



& MAKING CONNECTIONS

Making Connections

Housing & Residence Life understands that making personal connections is just as important as studying and having fun during your college years.

Students come to Youngstown State University from all over the country, and some travel from different countries. Living on campus provides a unique opportunity to live and learn with new people from a variety of economical, geographical, and cultural backgrounds.

When students choose to live with us, their first question is usually “When will I find out who my roommate is going to be?” In Housing & Residence Life, we work hard to match roommates and get roommate information sent out quickly.

A personal profile is sent out to every student living on campus. Students are strongly encouraged to take time to fill out their personal profile accurately so that Housing & Residence Life can match them accordingly with potential roommates.

Some students come to YSU knowing who they want to live with, and Housing & Residence Life assigns them together whenever possible. Students who already have a roommate in mind just need to make sure they make a note on their housing application and that their desired roommate does the same. It is important to keep in mind, however, that students in some specific academic or athletic programs are required to room together as part of their program.

Lasting friendships are built within our residence halls. Roommates are only the beginning of living and learning together. There is an entire community built in each residence hall that provides our students with social opportunities that will help to round out their college experience.



it's about **OPTIONS**

BUECHNER HALL

BUECHNER HALL is a privately owned and operated women's residence hall located near the center of campus. Although this facility is not operated by Housing & Residence Life, cooperation and regular communication ensure that the residents are integrated into campus life.

Designed and built expressly for women, the residence operated by the Buechner Foundation, a private, not-for-profit corporation, and is maintained by funds from the original bequest. The Foundation partially underwrites every resident's cost. Buechner Hall houses 75 women in single and double rooms. The air-conditioned rooms are completely furnished, including linens and telephones, and are cleaned weekly by the housekeeping staff. The dining room provides 15 home-cooked meals per week, with weekend cooking facilities available. The building has an elevator and sprinkler system and laundry facilities on each floor. Staff and security guards provide maximum 24-hour security service. A beautiful and immaculately maintained building, Buechner Hall is conducive to a quiet study environment.

620 Bryson Street
Youngstown, OH 44502
(330) 744-5361



UNIVERSITY COURTYARD APARTMENTS



Independently owned and operated, the **UNIVERSITY COURTYARD APARTMENTS** offer an ideal option for students wishing to live close to campus but not in a University residence hall. The University Courtyard Apartments are located in the Wick Oval, just minutes away from the center of campus and adjacent to Bliss Hall, home of the College of Fine and Performing Arts. There are 1, 2, or 4 bedroom apartments available, and each apartment comes equipped with ceiling fans, wall-to-wall carpet, appliances—including dishwasher and microwave—garbage disposal, and mini-blinds. In addition, every apartment comes fully furnished. In the apartment complex, there are planned resident activities, a study center including a computer lab, and a choice of fitness and recreation opportunities. The rent for the apartments is all-inclusive, which means the residents pay one amount for absolutely everything—central heat and air, electricity, water and sewer, local telephone, high-speed Internet access, and basic cable TV. Complete with a comprehensive and thorough safety and security plan, the University Courtyard Apartments offer an ideal way to “study hard and live easy.”

91 Wick Oval
Youngstown, OH 44502
www.universitycourtyard/ysu.asp
(330) 941-1999



- 12-MONTH LEASE
- ALL-INCLUSIVE RENT
- 1, 2, AND 4 BEDROOM FLOORPLANS
- FULLY FURNISHED
- FULL KITCHEN APPLIANCE PACKAGE
- CONVENIENT LAUNDRY FACILITIES
- PRIVATE & GROUP STUDY AREAS
- CARD-SWIPE LOCKS ON ALL ENTRY DOORS
- INDIVIDUAL LEASE FOR EACH RESIDENT
- 24-HOUR EMERGENCY MAINTENANCE
- INTRUSION ALARMS & PANIC BUTTONS
- SMOKE ALARMS & FIRE SPRINKLERS
- HANDICAPPED-ACCESSIBLE UNITS
- COMPUTER LAB W/INTERNET
- FITNESS CENTER, VOLLEYBALL, BASKETBALL

it's about **FINDING YOUR WAY**

DRIVING DIRECTIONS

From the northwest (Cleveland, Toledo):

Ohio Turnpike to Exit 218 (15). Follow I-80 East to I-680, Youngstown. Exit at 422 East and proceed to Wick Avenue exit. Turn left onto Wick Avenue. Turn left again at the first light (Westbound Service Road). Go two blocks to Elm Street (stop sign). For Cafaro and Lyden turn right. For Kilcawley, turn left and proceed two blocks to Kilcawley. For Wick/Weller, turn left and left again at the next stop sign. Proceed one block until you see Wick/Weller on your right.

From the north (Ashtabula):

Take Route 11 South to I-80 West. Take Route 711 South (exits left). Exit at Gypsy Lane and make a left onto Gypsy. Cross Belmont Ave. (Rt. 193); at the fourth traffic light after Belmont, turn right onto Fifth Ave. Drive down Fifth until you get to Rt. 422 (look for the YSU stadium), then cross the overpass and turn left onto the Eastbound Service Road, staying on the service road as you pass the stadium. Cross the Elm Street intersection, then turn right onto Wick. Make a right at the next light (Alumni House is on the right) onto University Plaza and enter the F-1 visitors' lot.

From the east (western PA):

Take I-80 to Route 711 South (Exits left). Exit at Gypsy Lane and make a left onto Gypsy. Cross Belmont Ave. (Rt. 193); at the fourth traffic light after Belmont, turn right onto Fifth Ave. Drive down Fifth until you get to Rt. 422 (look for the YSU stadium), then cross the overpass and turn left onto the Eastbound Service Road, staying on the service road as you pass the stadium. Cross the Elm Street intersection, then turn right onto Wick. Make a right at the next light (Alumni House is on the right) onto University Plaza and enter the F-1 visitors' lot.

From the southeast (Pittsburgh):

Take the PA Turnpike to Exit 234 (16A) on the Ohio Turnpike. From there, take I-680 approximately 10 miles to Exit 6B (Rt. 62 and Hubbard). Follow signs for YSU and take Rt. 422 West. Take the first exit (Wick Avenue) and go



straight at the light (Westbound Service Road). Go two blocks to Elm Street (stop sign). For Cafaro and Lyden turn right. For Kilcawley, turn left and proceed two blocks to Kilcawley. For Wick/Weller, turn left and left again at the next stop sign. Proceed one block until you see Wick/Weller on your right.

From the south:

Take Ohio Rt. 11 North to I-680 East. Then take exit 4A, Rt. 422 East. Exit the freeway at Wick Avenue and turn left onto Wick Avenue. Turn left again at the first light (Westbound Service Road). Go two blocks to Elm Street (stop sign). For Cafaro and Lyden turn right. For Kilcawley, turn left and proceed two blocks to Kilcawley. For Wick/Weller, turn left and left again at the next stop sign. Proceed one block until you see Wick/Weller on your right.

From the west (Akron, Columbus):

Take I-71 or I-77 North to I-76 East. Where I-80 and I-76 divide, follow I-80 until it intersects with I-680 East to Youngstown. Follow I-680 to Exit 4A, Rt. 422 East. Exit the 422 freeway at Wick Avenue and turn left onto Wick Avenue. Turn left again at the first light (Westbound Service Road). Go two blocks to Elm Street (stop sign). For Cafaro and Lyden turn right. For Kilcawley, turn left and proceed two blocks to Kilcawley. For Weller, turn left and left again at the next stop sign. Proceed one block until you see Weller on your right.

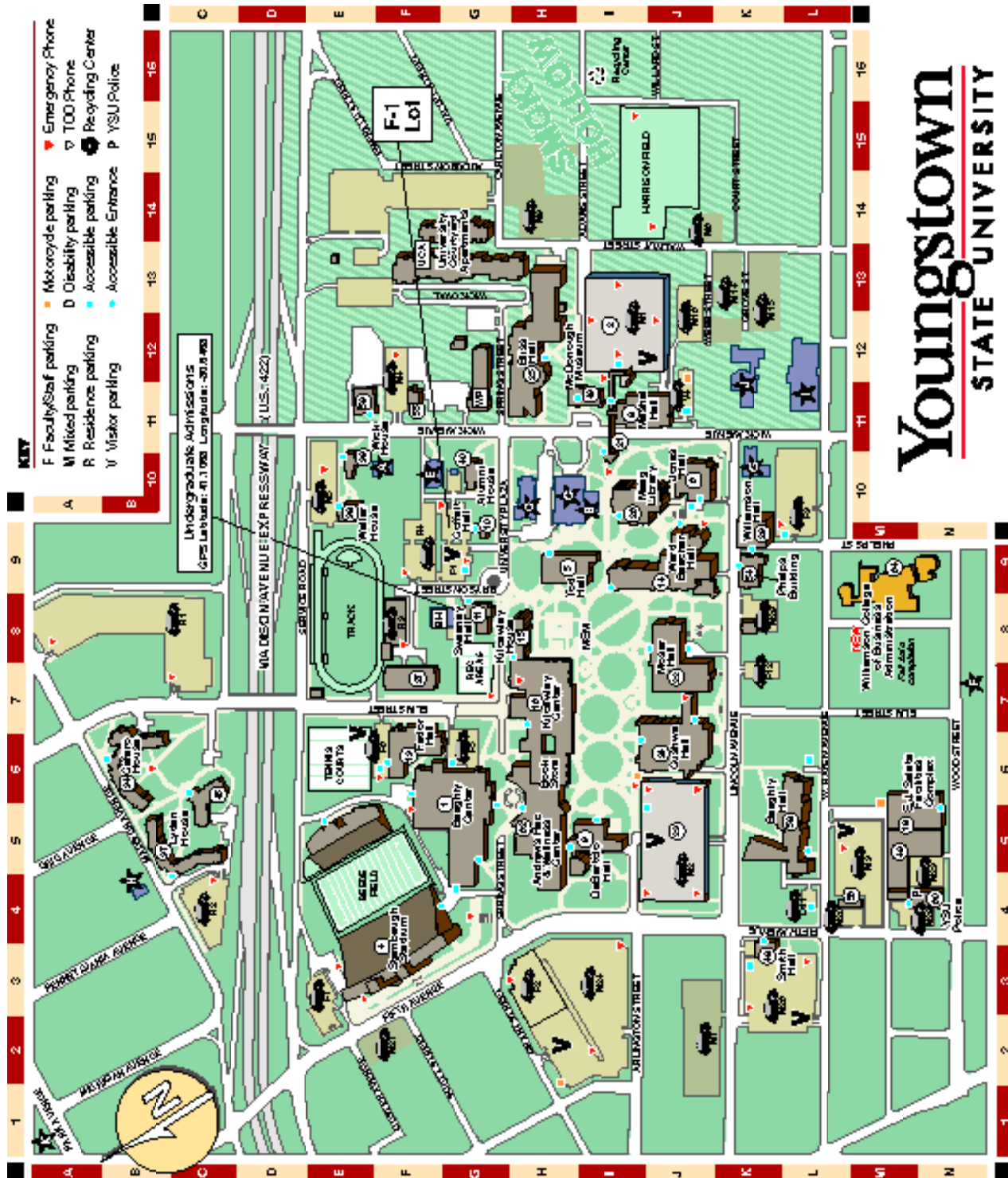
CAMPUS MAP

Name Grid Location

UNIVERSITY BUILDINGS	
MEM 9/11 Memorial.....	8H, 10G
40 Alumni House.....	10G
62 Andrews Student Recreation and Wellness Center.....	5H
1 Beeghly Center.....	5H
58 Beeghly Hall.....	5G
25 Bliss Hall.....	5L
12H	
BH Buechner Hall.....	8F
34 Cafaro House.....	6B
27 Central Utility Building.....	7F
45 Christman Dining Commons.....	5C
60 Clingan-Waddell (YSU Police) Coffelt Hall.....	4N, 9C
10 Cushman Hall.....	6J
24 DeBartolo Hall.....	5I
9 E.J. Salata Facilities Complex.....	5M
18 Fedor Hall.....	6F
13 Jones Hall.....	10J
16 Kilcawley Center.....	7H
15 Kilcawley House.....	8H
37 Lyden House.....	5B
2 M-1 Parking Deck.....	12I
23 M-2 Parking Deck 5J	
26 Maag Library.....	10I
56 Ohio Small Business Development Center.....	4M
43 McDonough Museum of Art.....	11I
59 Melnick Hall.....	11E
8 Meshel Hall.....	11I
22 Moser Hall.....	7I
55 Peck-Schoff House.....	11F
21 Pedestrian Bridge.....	11I
54 Phelps Building.....	9K
48 Smith Hall.....	3K
4 Stambaugh Stadium.....	3F
11 Sweeney Hall.....	8G
5 Tod Hall.....	9H
UCA University Courtyard Apartments.....	13F
14 Ward Beecher Hall.....	9J
38 Weller House.....	10E
49 Westinghouse Building.....	5M
39 Wick House.....	10E
WP Wick-Pollock Inn.....	11G
29 Williamson Hall.....	9K
64 NEW Williamson College of Bus. Admin.....	9M

AREA ARTS & CULTURAL VENUES & CHURCHES

A	Arms Family Museum of Local History.....	10F
B	Beecher Center for Technology in the Arts.....	10I
C	Butler Institute of American Art.....	10H
D	Butler Institute - North Annex.....	10H
E	Holy Trinity Romanian Orthodox Church.....	10F
F	Museum of Industry and Labor.....	7N
G	New Beginnings Outreach Ministries.....	10K
H	Newman Center.....	4B
I	Public Library.....	11L
J	St. John's Episcopal Church.....	11K
K	Wick Park.....	11A



Youngstown
STATE UNIVERSITY



housing.ysu.edu

Housing & Residence Life

One University Plaza
Youngstown, OH 44555

Phone: 330.941.3547

Youngstown
STATE UNIVERSITY